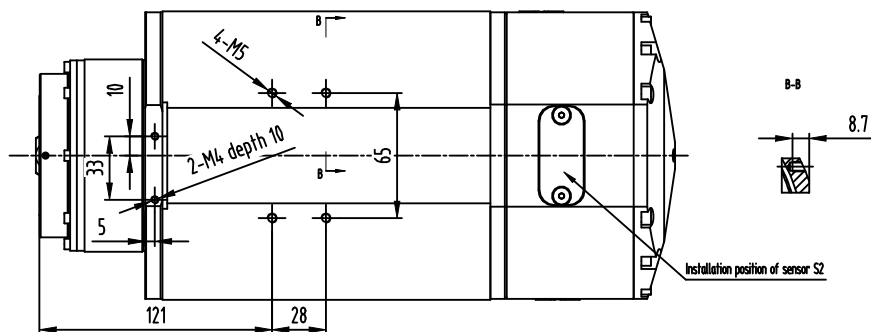
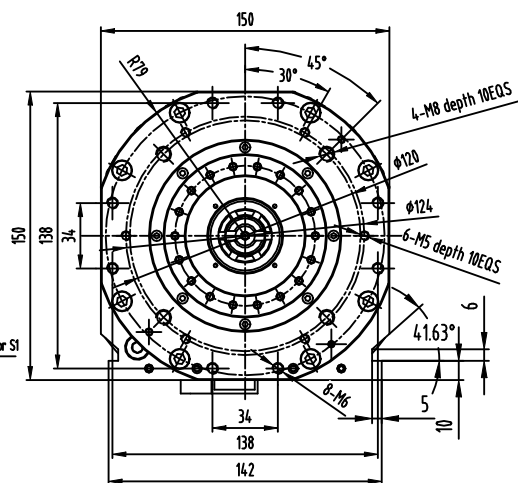
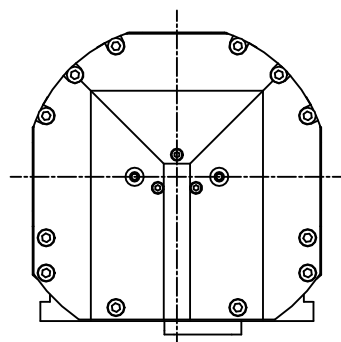


Wiring instructions for sensors	
Sensor S1 (Tool lock defection)	Brown cable:+24V DC power supply Black cable:signal output(PNP normally open)
	Blue cable:0V DC power supply
Sensor S2 (Tool release defection)	Brown cable:+24V DC power supply Black cable:signal output(PNP normally open)
	Blue cable:0V DC power supply
Sensor S3 (Spindle stop defection)	Brown cable:+24V DC power supply Black cable:signal output(PNP normally open)
	Blue cable:0V DC power supply



										Jiangsu HQD Spindle Motor Co., Ltd.		
Marks	Number of places	Zoning	Modified document number	Signature	Date					Phase mark		
Designed by			Standardized by									
											GDL 75-HSK63F-24Z/17-00-1	
Reviewed by						Total page(s)		Page				
Processed by			Approved by									