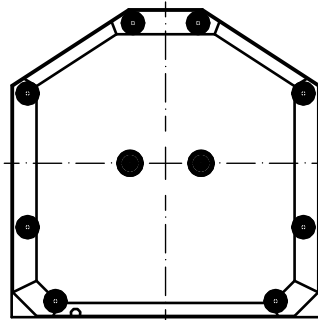
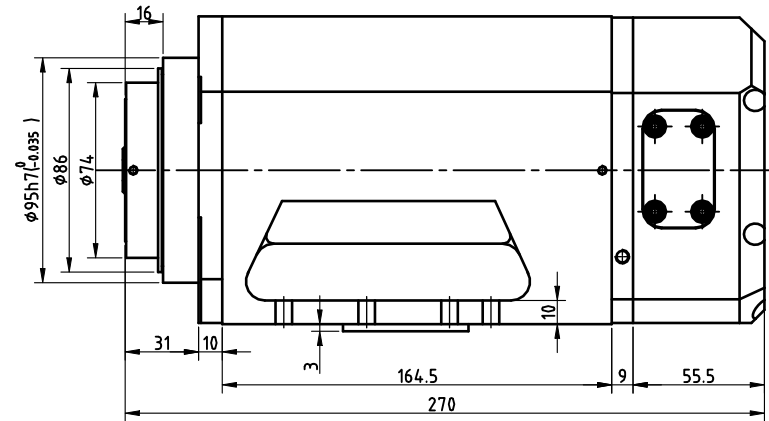
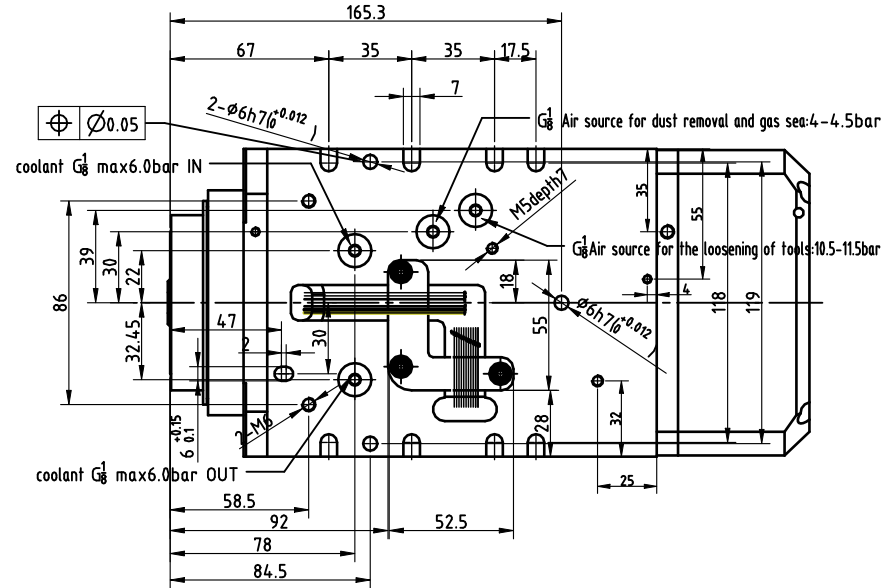


Wiring instructions for power line and thermal protection switch	
Power line	White is the power cable of U-phase of the motor
	Green is the power cable of V-phase of the motor
	Red is the power cable of W-phase of the motor
	Yellow-green is the GND protective grounding cable of the motor
Temperature control switch	Brown thin wire is the overheat protective cable of stator
	Brown thin wire is the overheat protective cable of stator
Note: The temperature control switch is used for overheat protection of stator, and the switch should be connected in series with the machine safety stop system. It is normally closed. When the stator temperature is $\geq 100^{\circ}\text{C}$, the switch is open, and when the temperature is lower than 100°C , the switch returns to the closed state. Switching capacity: 250V, 5A	



Rated Power	18Kw
Rated Voltage	380V
Rated Rotation	15000r/min
Rated Frequency	50Hz
Rated Current	30.5A
Number of Pole	4P
Bearing of Grease Type	2X7010C 2X7006C
Rotating Direction	Counterclockwise viewed from the end of spindle extension
Cooling Method	Water cooling
Tool Holder	HSK-63F
Weight	About 17 kg



Wiring instructions for sensors	
Sensor S1 (Tool lock detection)	Brown cable: +24V DC power supply
	Black cable: signal output (PNP normally open)
	Blue cable: 0V DC power supply
Sensor S2 (Tool release detection)	Brown cable: +24V DC power supply
	Black cable: signal output (PNP normally open)
	Blue cable: 0V DC power supply
Sensor S3 (Spindle stop detection)	Brown cable: +24V DC power supply
	Black cable: signal output (PNP normally open)
	Blue cable: 0V DC power supply

