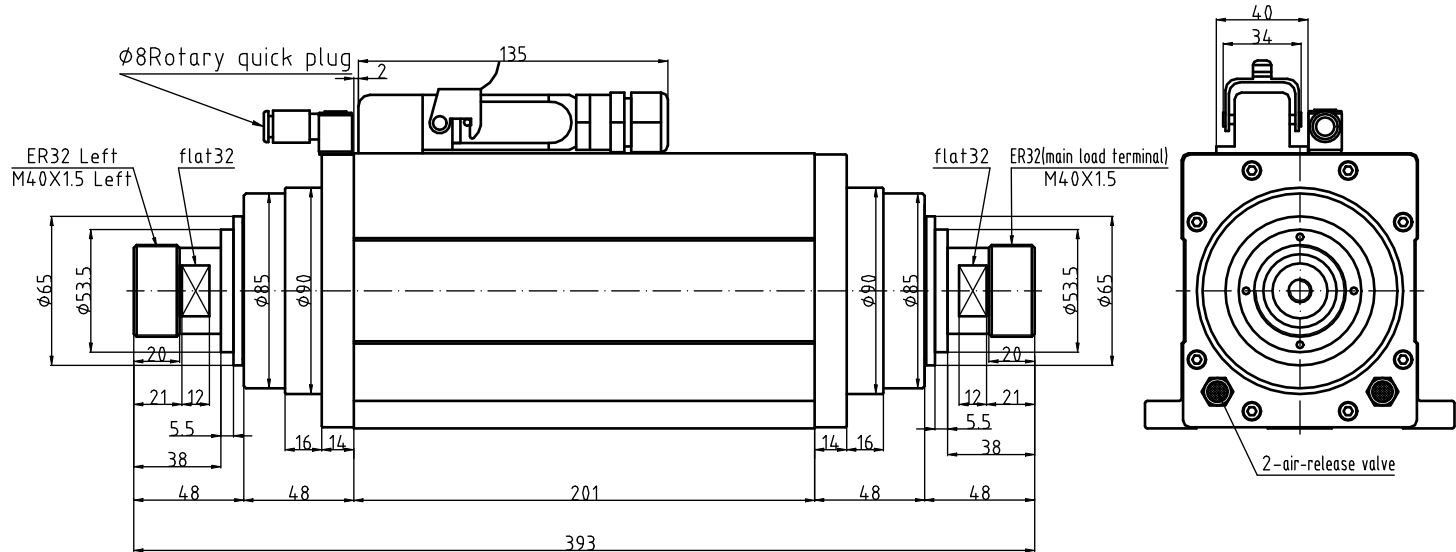
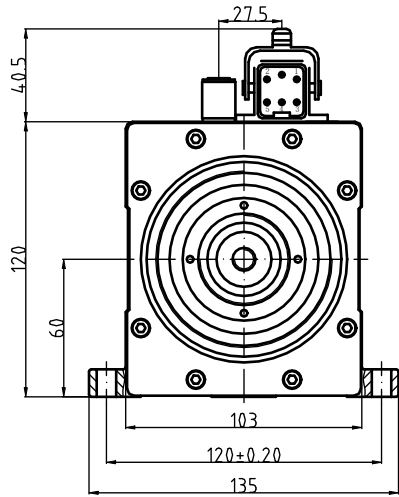
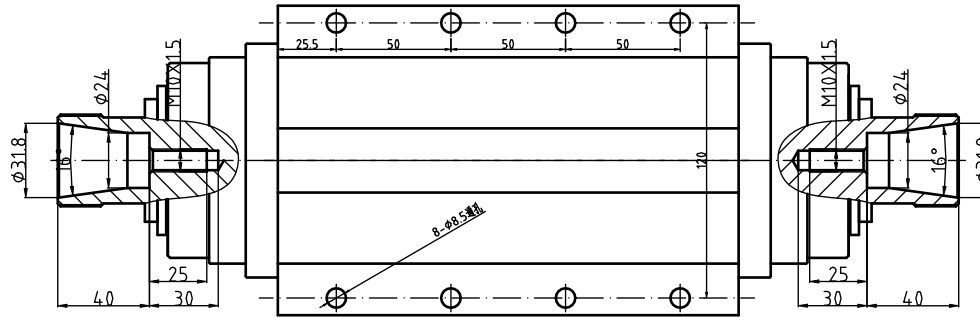
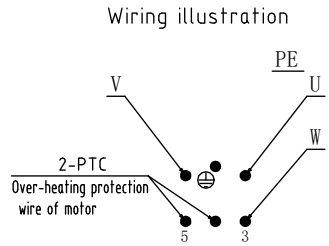


GDF60-18Z/3.5S Profile drawing



GDF60-18Z/3.5S
Power: 3.5Kw-S6 60%
Voltage: 380V
Current: 7.80A
Frequency: 300Hz
Rotational speed: 18000r/min

Weight: approx 16KG
Nut: ER32 and ER32 Left stud
Cool: cooling of compressed air/air pressure:
0.6-0.8MPa
Bearing: 2X7008C 2X7008C P4/grease
lubrication
Rotation directionn: Counterclockwise viewed from
the ER32 shaft extension

Special Warning:

- 1.This motorized spindle has large torque and would take long time to stop. It can be stopped quickly to apply brake resistance for the transducer converter.
- 2.The compressed air shall be clean and dry with filtering precision of $0.1\mu\text{m}$! Air sealing shall be normally open. It is recommended to apply two levels of filtering with precisions of $5\mu\text{m}/0.1\mu\text{m}$, and the filter shall be equipped with automatic drainage.

Notice:It shall apply thread adhesive or spring washer to prevent loosening while mounting fastening screw!